

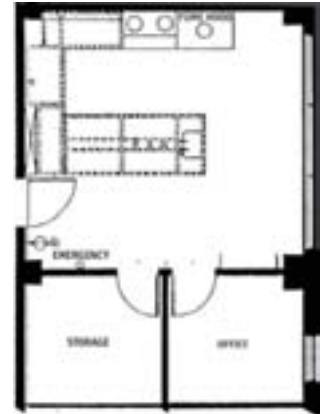


CHICAGO TECHNOLOGY PARK

L600

Chicago Technology Park
600-square-foot
Laboratory Spaces

Successful life sciences businesses start here.



The L600 suite provides economical start-up space for life science, technology and chemistry companies in the Chicago Technology Park's (CTP) Research Center. With 400 square feet of fully equipped "wet laboratory" and 200 square feet of contiguous office/utility space, the L600 provides an ideal footprint for start-up companies. The suite includes 85 square feet of bench-top space, under-counter cabinets, a 4-foot ventilation hood and open wall space for your equipment.

Each suite is equipped with temperature control, separate electrical panels, and card-controlled access. Tenants are provided deionized-distilled water, gas and vacuum within the suite and can access fee-for-use facilities in the Research Center for dishwashing, autoclaves and darkroom. Customization is permitted, and improvements may be negotiated with the Illinois Medical District.

The Research Center is a secure 56,000-square-foot facility providing start-up companies with access to conference room facilities, reception services for delivery of packages and guest sign-in, restrooms, an administrative suite with pay-per-service copier and fax facilities, a UPS pickup box, a loading dock, elevators for freight and personnel, café/breakroom areas and an outdoor garden area with seasonal seating.

The Chicago Technology Park is a dynamic community of more than 30 growth-stage companies, located on Chicago's Near West Side, only minutes from the Chicago Loop and within walking distance of the historic Tri-Taylor Historic District and Chicago's Little Italy restaurant row on Taylor Street. Located within the Illinois Medical District and adjacent to the University of Illinois at Chicago, Rush University and the University of Illinois' Medical School, the nation's largest medical school, you'll find the ingredients to help small companies grow: talent, technology and access to capital.

Rental Rate:

The rental rate for the L600 is \$26.00 to \$32.00 per square foot, depending on laboratory improvements and term of occupancy.

Utilities:

- Deionized, hot and cold tap water
- Vacuum and gas service lines
- Electrical service (110V, 220V, 440V)
- Emergency power (110V duplex outlet)
- Laboratory temperature control, telephone and T1 internet access are billed separately

Maintenance:

The Research Center provides from 8am to 5pm, on-site facilities maintenance with a licensed engineer and apprentice as well as emergency weekend and night service.

For more information,
contact Mich Hein
at 312.633.3434



www.techpark.com

2201 West Campbell Park Drive
Chicago, IL 60612

Rental rates, specific laboratory appointments, usable area and access to services may vary and are subject to negotiations with the Illinois Medical District.